

15th NRN Meeting
Poitiers, 19 September 2019

ITALIAN STRATEGY FOR INNER AREAS

National Strategy for Inner Areas (NSIA)

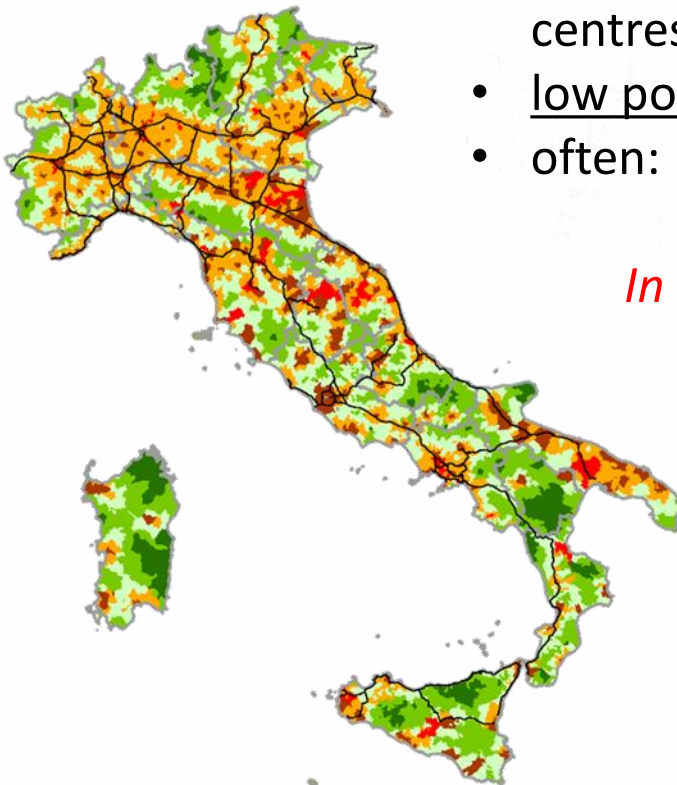
In the 2014-2020 programming period, Italy has put in place a new integrated policy called the National Strategy for Inner Areas (NSIA)

Italy's Inner Areas are rural areas characterized by their distance from the main service centers (education, health and mobility)

According to the latest census, Inner Areas make up 53% of Italian municipalities (4 261), are home to 23% of the Italian population (13 540 000 inhabitants) and cover 60 % of the national territory

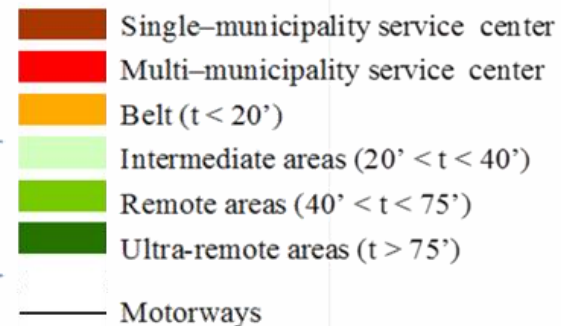
Characteristics of the Inner Areas

- a NOT adequate offer of/access to essential services to assure citizen's rights;
- being rich in natural assets (water resources, agricultural systems, forests, natural landscapes) and cultural resources (archaeological settlements, abbeys, small museums, craft centres);
- low population density;
- often: high seismic risk and with natural constraints.



In Italy inner areas cover more than 50% of the whole national territory embracing about 23% of total population and more than 4,000 municipalities

Inner
Areas



Why a National Strategy for Inner Areas

- To give true content to the EU Cohesion Policy Territorial Objective
- To overcome the rural-urban dichotomy
- To empower territories and people to restore growth and well-being over marginalised areas, recognising their diversity
- To recover not enhanced natural and cultural assets, reducing territories depopulation and consequent abandonment costs

Innovation of Inner Areas Strategy

Five main innovations of Inner Areas:

- National dimension and multilevel governance (National Administrations – Regions – municipalities and inter municipalities cooperation)
- Parallel improvements of services (mainly through national policy) and investments (energy; agriculture; crafts; cultural heritage; regional policy)
- Multi-fund approach (EAFRD, ERDF, ESF, EMMF and National Funds)
- Participatory approach to local development – State, Regions, **Municipalities Associations** , private sector (attention to Policy Results - co-project designing)

Selected Areas

At the current stage, selected areas within the Strategy re:



- ❖ **72** areas with about 2mln. total residents and **1,077** municipalities;
- ❖ **711** municipalities (66%) are in mountainous areas (27% of Italian mountainous municipalities);
- ❖ on average: **15** municipalities and **29,000** residents per area;
- ❖ low population density;
- ❖ about **3%** of Italian population and **16.7%** of Italian territory;
- ❖ **55%** of those 2 mln. live in remote and ultra-remote areas;
- ❖ **4.4%** population drop among selected areas between 2001 and 2011, and **3.2%** between 2011 and 2017;
- ❖ **39 Strategies** approved (**may 2019**)

Examples of supported projects

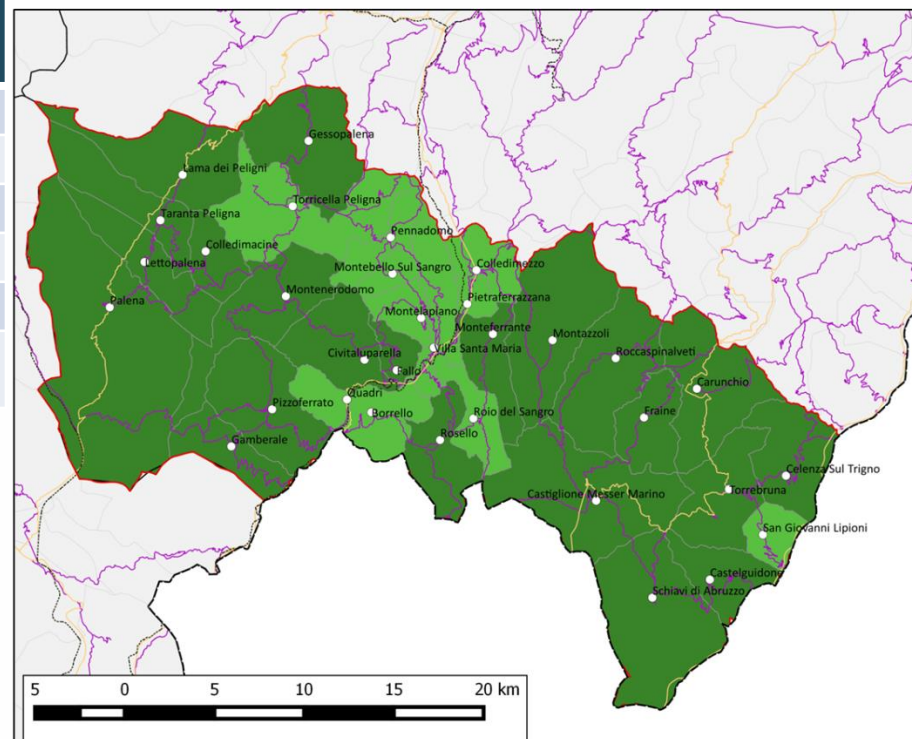
The kinds of actions being supported so far include:

- A community car pooling initiative in Val Maira (Piedmont), which uses a web platform and is managed by a local community cooperative;
- Remote classrooms in secondary schools in Beigua Sol (Liguria) and Piacenza-Parma Apennine (Emilia Romagna);
- Equipping local pharmacies in Matese (Molise) with smart technologies to allow remote diagnostics by hospital personnel;
- Smart devices to allow inhabitants to monitoring landslides and strengthen civil protection in Madonie (Sicily)
- Creation of a single poly-functional centralised school, Community Hospital, Social-aim transport (Abruzzo)
- Co-operation among supply chain actors for the improvement of quality production, Investments for the diversification of farming activities (Abruzzo)

The Basso Sangro Trigno

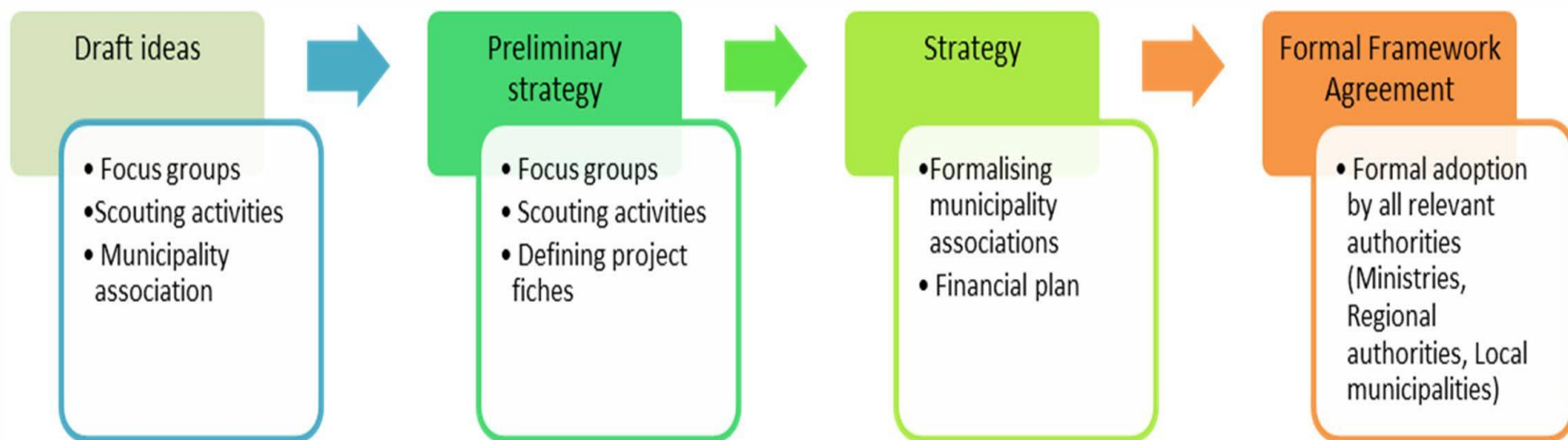
	Project area	Abruzzo Inner Areas	Italy
Number of municipalities	33	230	8,092
Population 2011	22,568	484,353	59,433,744
Population 2016	21,289	479,924	60,665,551
Pop. var % 2016-2011	-5.7	-0.9	2.1
Pop. var % 2011-2001	-13.7	-0.5	4.3
Pop. var % 2011-1971	-43.8	-4.0	9.8

Expected outcomes	Actions
Improvement of students' skills, security and usability of school institutes, territorial school activities, and improvement of didactics.	Creation of a single poly-functional centralised school institute in Celenza sul Trigno
Enhancement of infrastructure network and of provision of territorial healthcare and social services .	Community Hospital New emergency service locations Fragility nurse
Enhancement of the transport system for the elderly, students and workers.	Social-aim transport



- Single-municipality service center
- Multi-municipality service center
- Belt ($t < 20'$)
- Intermediate areas ($20' < t < 40'$)
- Remote areas ($40' < t < 75'$)
- Ultra-remote areas ($t > 75'$)
- Motorways

From draft ideas to the final strategy: a process in four main steps



Inner Areas: Focus Group for Strategy definition

The Focus Group is organised by the Italian Committee on Inner Areas in collaboration with Regions and local territories. On average it lasts 3 hours, broken down as follows:

4 sessions: local development, healthcare services, education, transport services;

16 speakers: 3 local actors + 1 expert from relevant ministry each session.



A typical session focused on local healthcare system

- ❖ 1 speaker from the Ministry of Healthcare – Directorate General health services
- ❖ 1 chief medical officer representing local healthcare system
- ❖ 1 Social Care Supply Worker
- ❖ 1 NGO or ONLUS member or chief

Financial allocations by sector for the 39 Strategies

	<i>Financial allocation by sector (public funds)</i>	
	Euro	Percentage
Mobility	€ 90.551.131	14,4%
Health Care	€ 75.957.664	12,1%
Education	€ 67.001.474	10,6%
Total	€ 233.510.270	37,1%
Agriculture and livestock	€ 68.956.472	11,0%
Forestry	€ 15.199.563	2,4%
Transparency and efficiency of the PA	€ 10.259.887	1,6%
Energy	€ 48.349.274	7,7%
Enterprises	€ 60.429.358	9,6%
Infrastructures and digital services	€ 37.864.086	6,0%
Employment and training	€ 18.835.449	3,0%
Nature, culture and tourism	€ 120.537.649	19,2%
Territorial protection and risk prevention	€ 15.289.919	2,4%
Total	€ 395.721.656	62,9%
Overall Total	€ 629.231.926	100,0%

Conclusions

- ❖ Italian Inners Areas are building up their Strategies to reverse their demographic and socio-economic decline, working on innovative solutions for basic services provision and local development
- ❖ NSIA is based on Multi level governance and the Multi funds approach
- ❖ Parallel improvements of services (mainly through national policy) and investments
- ❖ Enhancement of the transport system (rationalition of trasport systems serving social aim, student needs, etc.)
- ❖ Enhancement of the Healthcare systems and Integration between healthcare and social services
- ❖ Involved actors strongly work on Education systems (reorganising school settings, classes and pedagogical methods, innovative didactis)
- ❖ Better linkage between education options and jobs opportunities
- ❖ Introduction of education options focused on multifunctional agriculture and sustainability
- ❖ Development projects with strong emphasis on tourism and agriculture

THANKS
Massimiliano PIATTELLA
Daniela STORTI

Rete Rurale Nazionale

Autorità di gestione: Ministero delle politiche agricole alimentari, forestali e del turismo

Via XX Settembre, 20 – Roma

www.reterurale.it - @reterurale

www.facebook.com/reterurale