



Governance models promoting this integration with citizens and local areas as well with the downstream and consumers



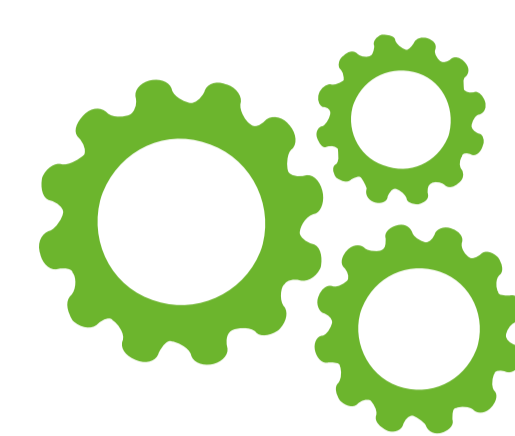
AGRI Innovation summit 2019



Other Thematic Network

FROM USES TO USERS - Innovation with users: living rural areas and adapted technologies.

DES USAGES AUX USAGER-E-S/Innover par et avec les UsageR-E-s: territoires ruraux vivants et technologies appropriées



Practical problem

Farmers Technologies: industrialization of technologies for transformation processes and the necessary reintegration of added-value in the farms



Partners

The Farmer's Workshop (Atelier Paysan) combines farm partnerships and scientific community and Cap Rural in charge of the Regional Rural Network in Auvergne Rhône Alpes region.



Calendar

Start: 01/01/2015
End: 01/01/2021



Budget

Total amount:
€1,900,000

Objectives of the project

This project is all about agroecology: the development of an open agriculture, adaptable to local contexts and resilient will be achieved by an agricultural equipment manageable by farmers themselves and by their involvement in its conception. The question at stake here is preservation and valorization of knowledge and know-how, reappropriation by newcomers and of the necessary mastery of their working tool by living rural areas and farmers. These skills allow the possibility of sharing the tools conceived, and some kind of technical and financial autonomy to ensure that farmers obtain a fair pay.

Main activities

Identification of farmer innovation, interactive support by R&D, support for thematical experimentation, partnerships with research and rural development, creation and dissemination of free documents such as: designs, tutorials, methods... Focus: this collaborative innovation through uses develop itself with the rise of local autonomous dynamics, adapted to the local needs and by way of consequence viable. Thematic collections record the innovations identified or produced within the framework of the project so as to foster new initiatives. The book "On-farm processing and adapted technologies" deals with the concrete means necessary to ensure a come-back of on-farm processing and its added value.

Expected results

Requirement specifications adapted to tools and buildings, detailed review of the supplies needed for an independent duplication: designs and tutorials on tools/and buildings and an update of the tools already approved in the process; collaborative research program with universities; methodological resources useful for rural development stakeholders in order to foster innovation with the users; logbook of farmer innovations recorded in tours; multiactors training modules to support specific audience (future farmers, farmers under strain).

Results so far/first lessons

This innovation through uses is bottom-up, collaborative, open, cross-cutting, it is a process that involves the users personally in the very design of the innovations born from the needs and practices of the users disseminated through an information exchange network open to the users. Yet to talk about uses is partial because these innovations entail the necessity to create and do something concrete even if it may be reduced to a simple request by a user club. That is why uses but also users are the starting point, with the diversity and uniqueness of their approaches: newcomers, farmers, farmers under strain, among others.

Who will benefit

Farmers, future farmers, farmers under strain. Agricultural development bodies, rural development agencies, public authorities.

Supported by:

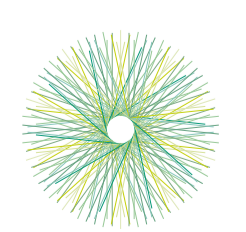
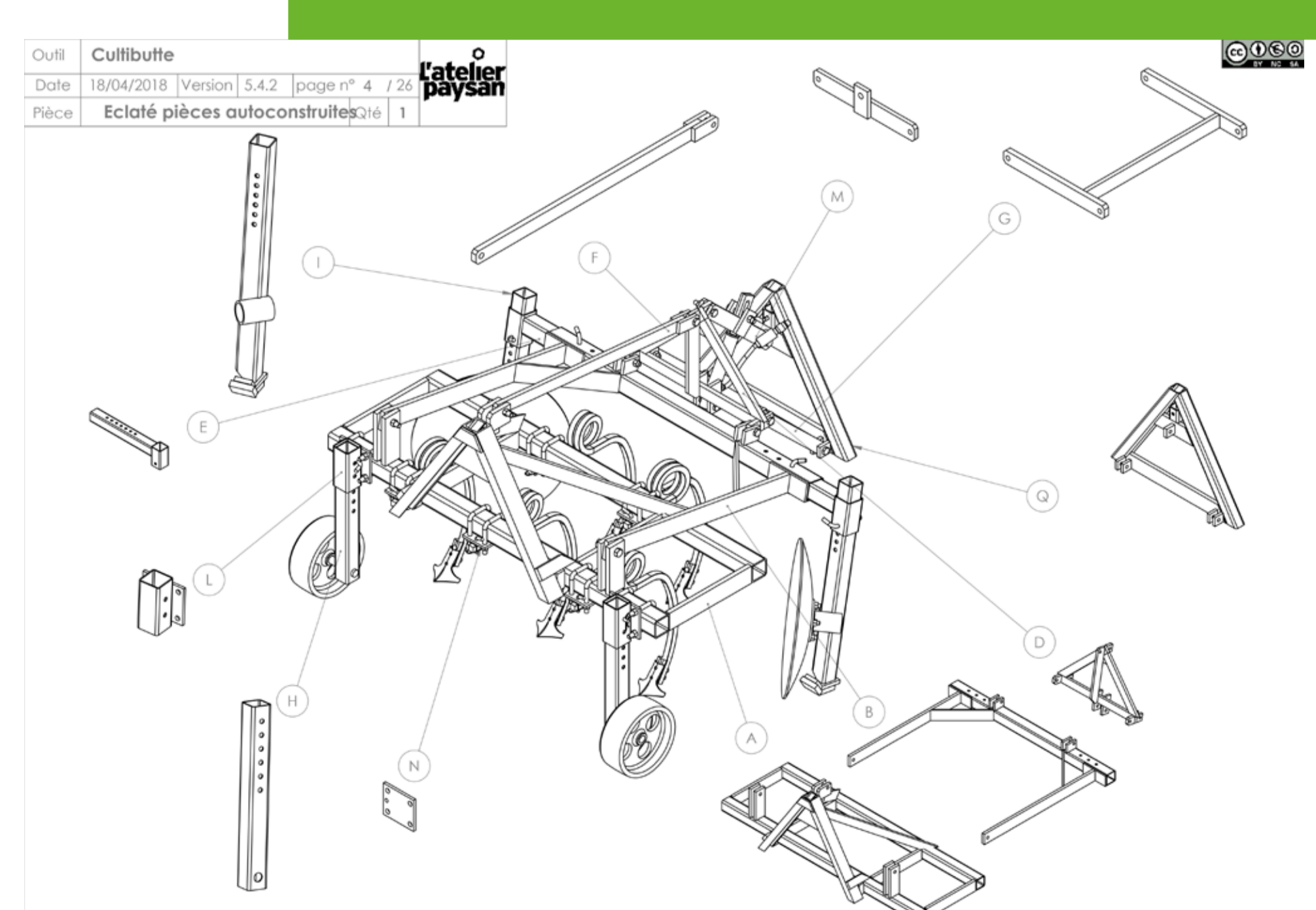


MINISTÈRE DE L'AGRICULTURE ET DE L'ALIMENTATION

Cette action bénéficie du soutien du Ministère de l'Agriculture et de l'Alimentation au titre du compte d'affaires agricoles - développement agricole et rural (C.A.D.A.R.). Sa responsabilité ne saurait toutefois être engagée.



Contact: Marie Mardon
Mail: m.mardon@atelierpaysan.org



AGRI INNOVATION SUMMIT 2019 LISIEUX
More information www.reseaurural.fr/ais2019

